



Konstruktionsdetails

Fassade

Verbundplatte | Hauspaneel

Inhalt

Übersicht	3
Außenecke Var. 1	4
Innenecke Var. 1	5
Sockel Var. 1	6
Sockel Var. 2	7
Attika Var. 1	8
Attika Var. 2	9
Fensterbank Var. 1	10
Fensterbank Var. 2	11
Fensterleibung Var. 1	12
Fensterleibung Var. 2	13
Fenstersturz Var. 1	14
Fenstersturz Var. 2	15





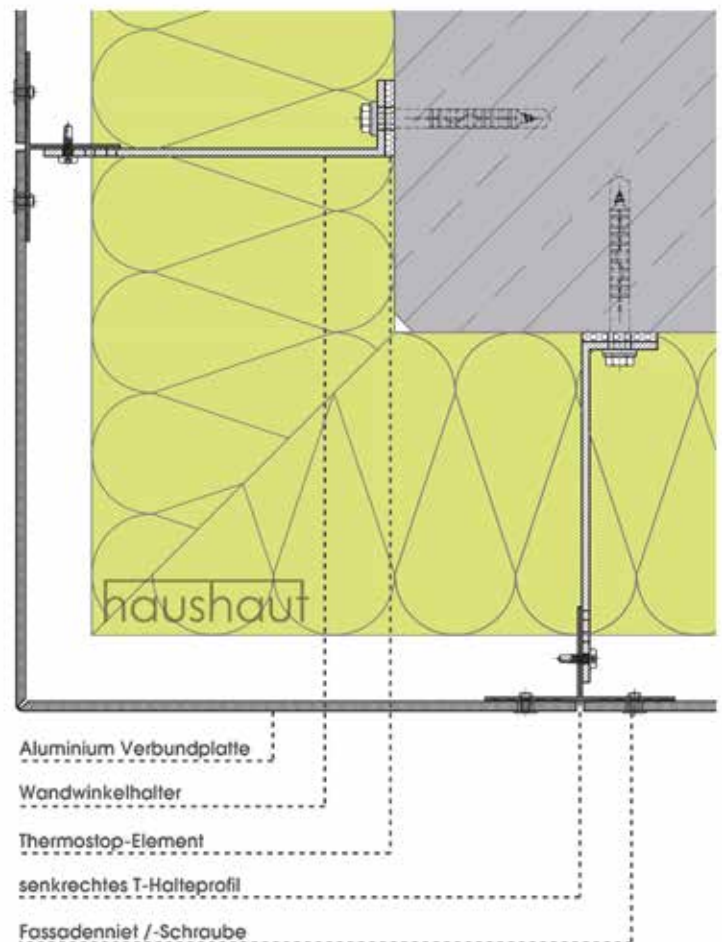
Übersicht

—

Konstruktionsdetails



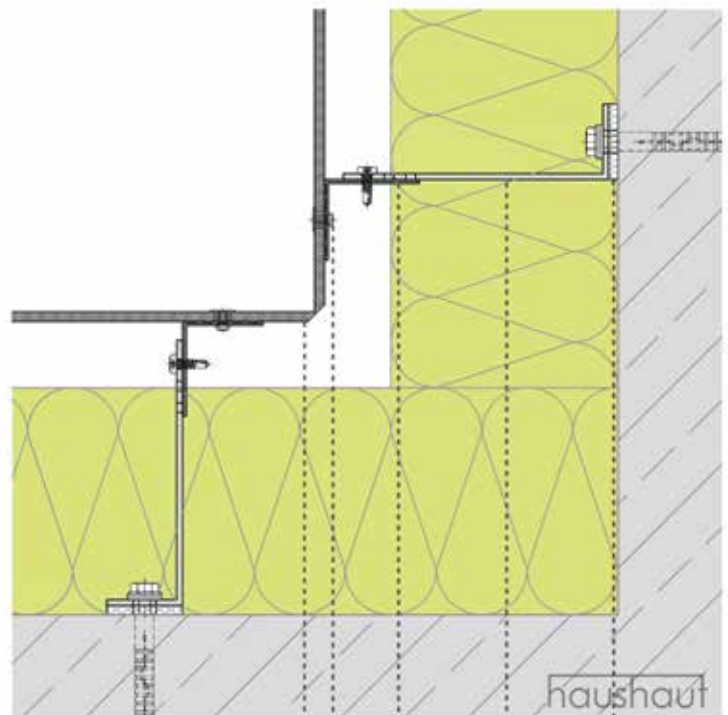
3D-Schnitt Außenecke Var. 1



Detail Außenecke Var. 1



3D-Schnitt Innenecke Var. 1



Aluminium Verbundplatte

Fassadenniet /-Schraube

senkrecht L-Halteprofil

Wandwinkelhalter

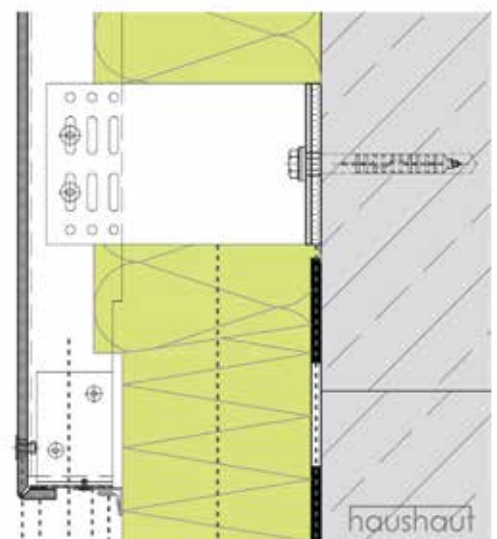
Thermostop-Element

Detail Innenecke Var. 1

Konstruktionsdetails



3D-Schnitt Sockel Var. 1



Fassadenniet /-Schraube

Aluminium Verbundplatte

senkrecht T-Halteprofil

Lochprofil

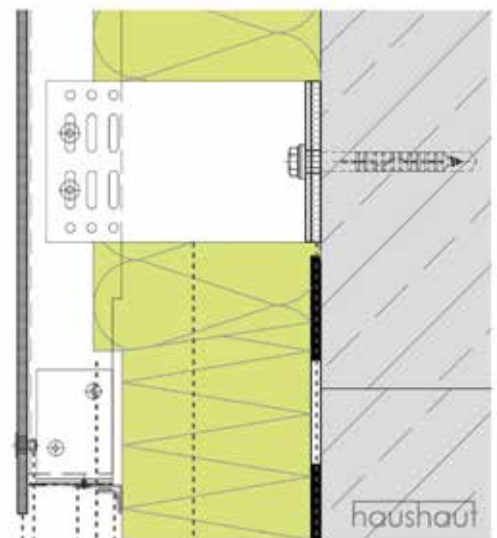
Einschubprofil

Wandwinkelhalter

Thermostop-Element



3D-Schnitt Sockel Var. 2



Aluminium Verbundplatte

Fassadenniet /-Schraube

Lochprofil

senkrecht T-Halteprofil

Einschubprofil

Wandwinkelhalter

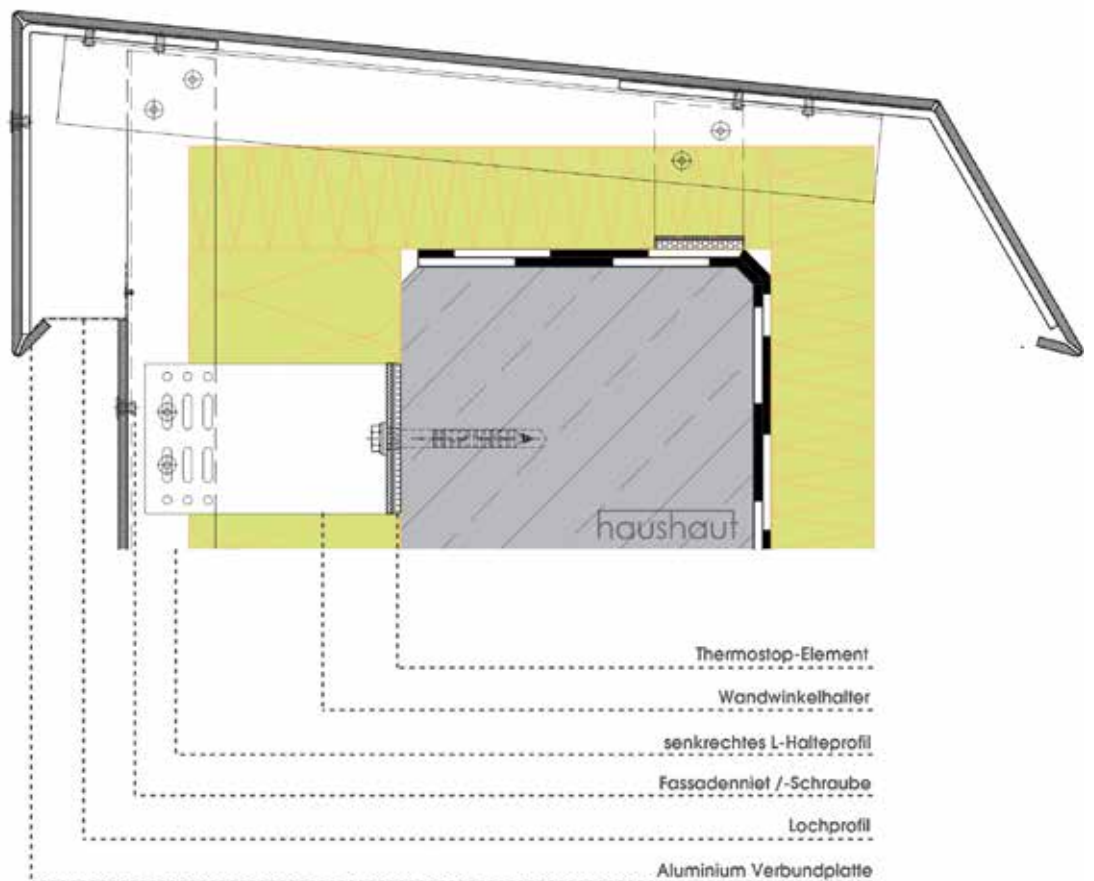
Thermostop-Element

Detail Sockel Var. 2

Konstruktionsdetails

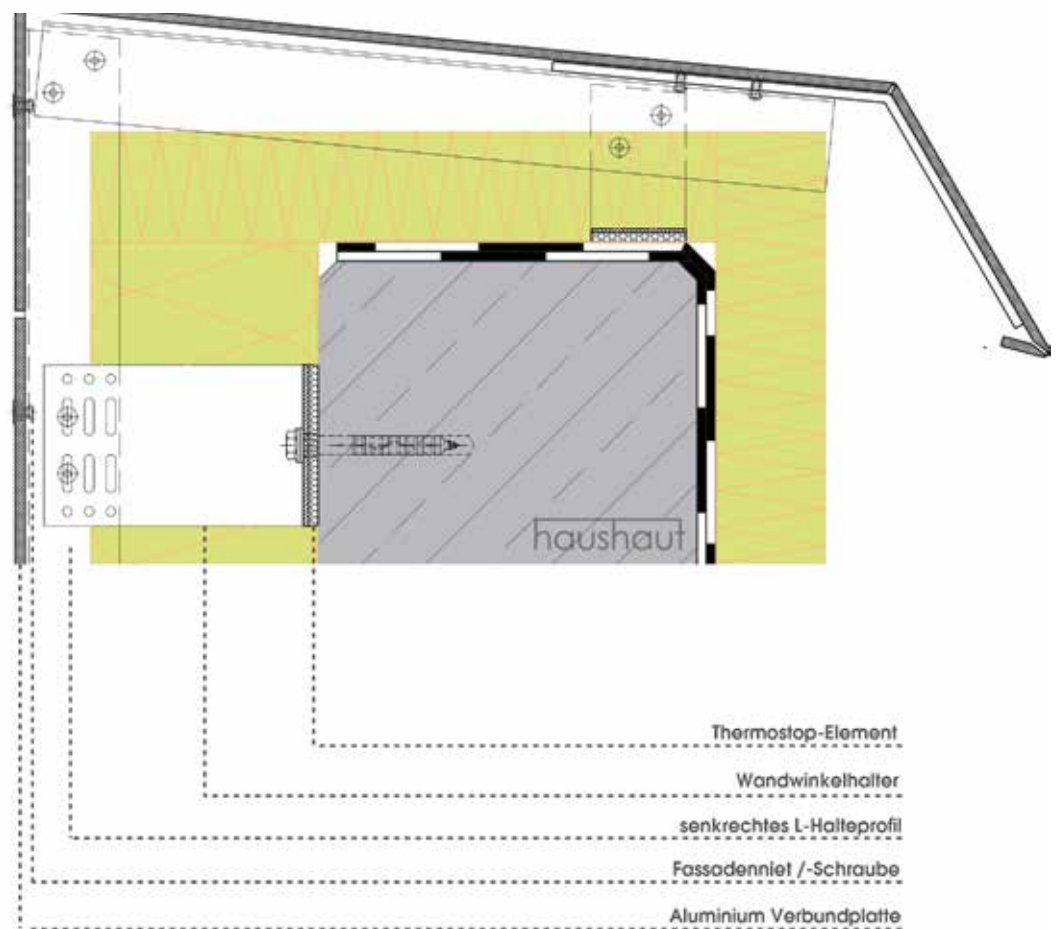


3D-Schnitt Attika Var. 1



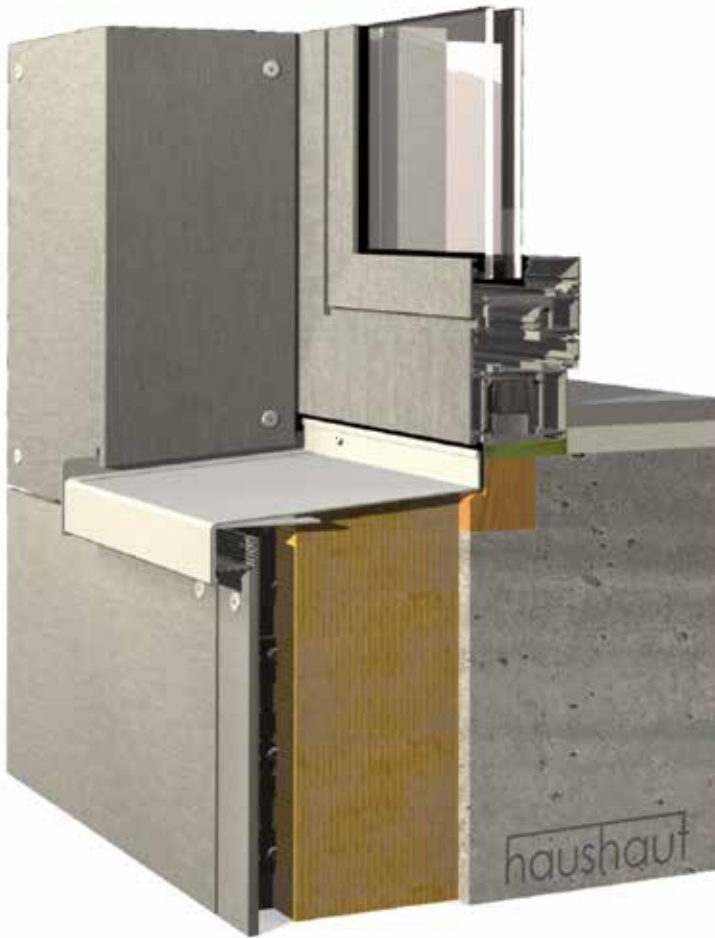


3D-Schnitt Attika Var. 2

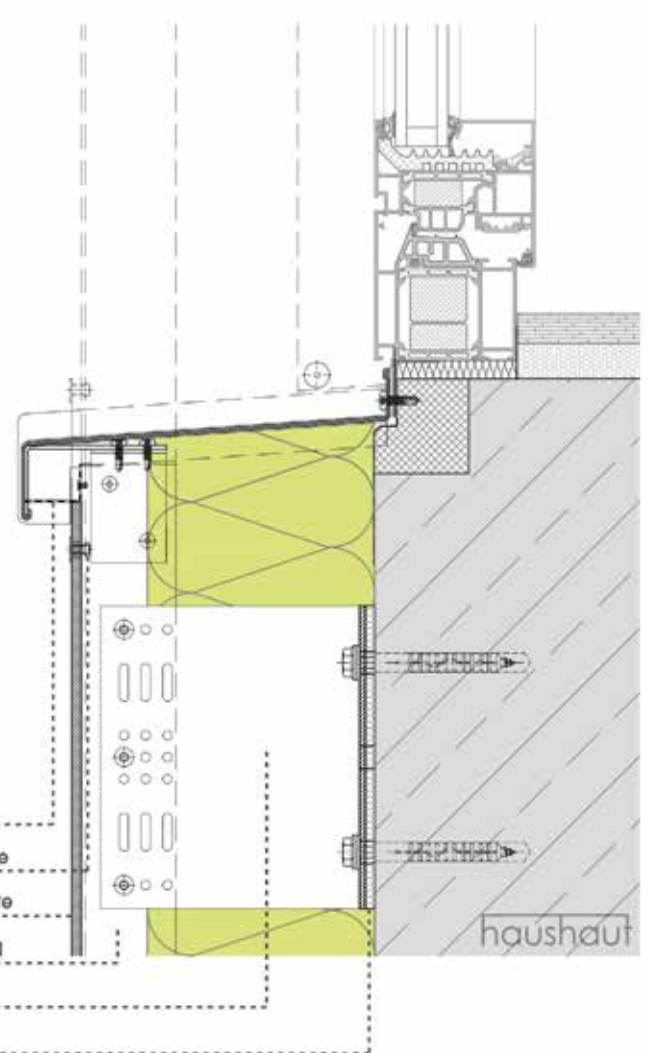


Detail Attika Var. 2

Konstruktionsdetails



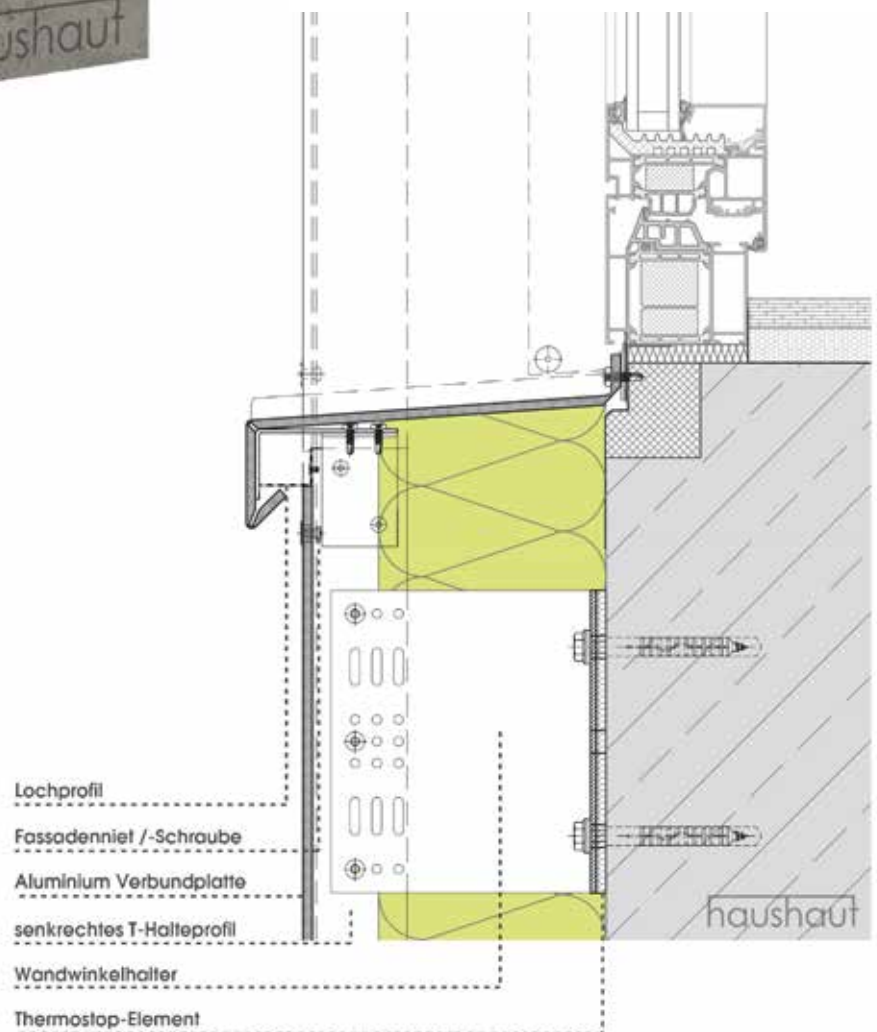
3D-Schnitt Fensterbank Var. 1



Fensterbank Var. 1



3D-Schnitt Fensterbank Var. 2

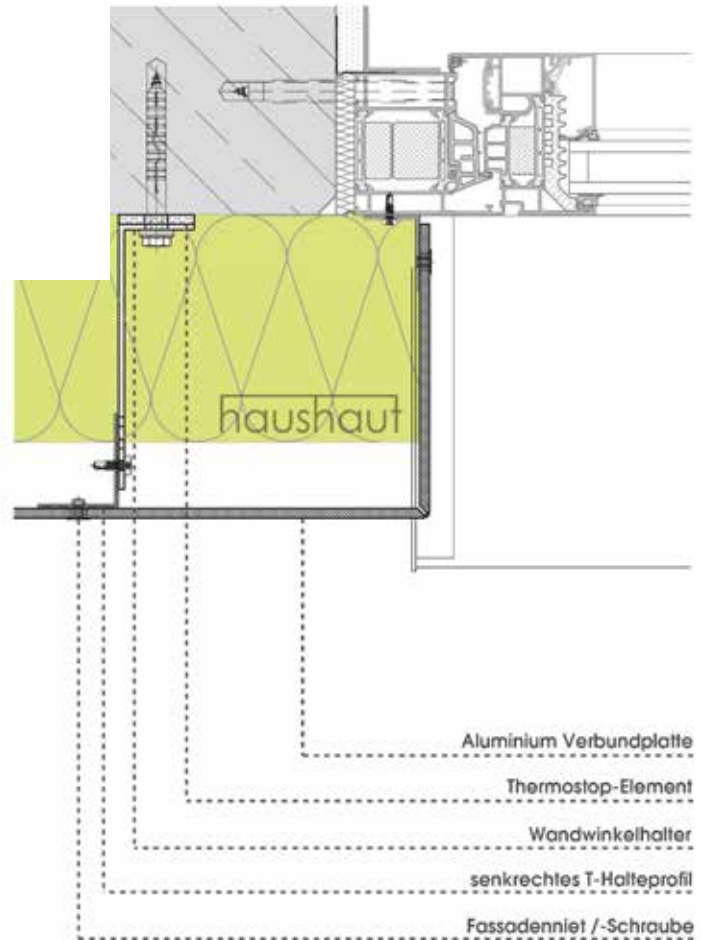


Detail Fensterbank Var. 2

Konstruktionsdetails



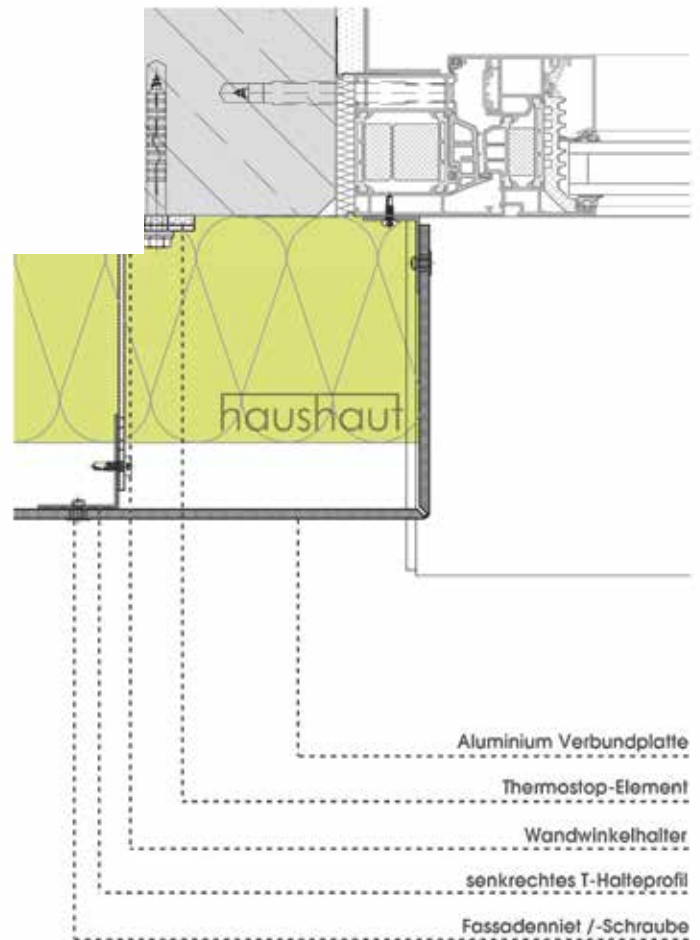
3D-Schnitt Fensterleibung Var. 1



Fensterleibung Var. 1

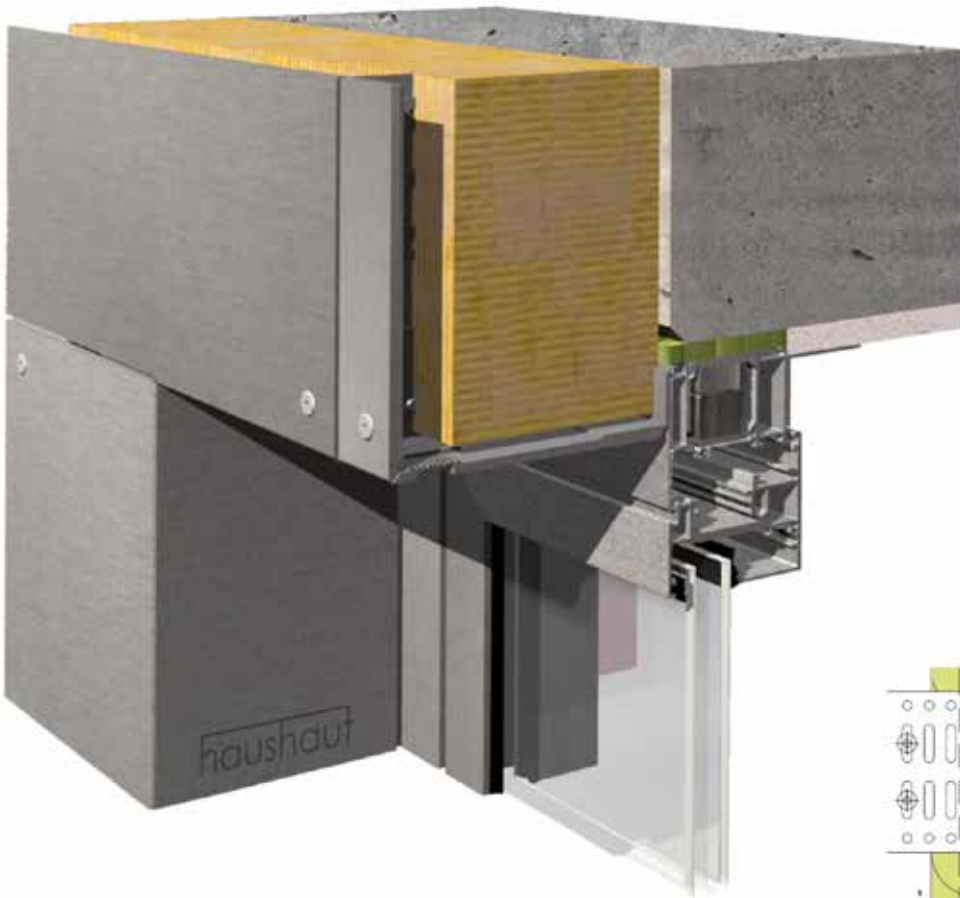


3D-Schnitt Fensterleibung Var. 2

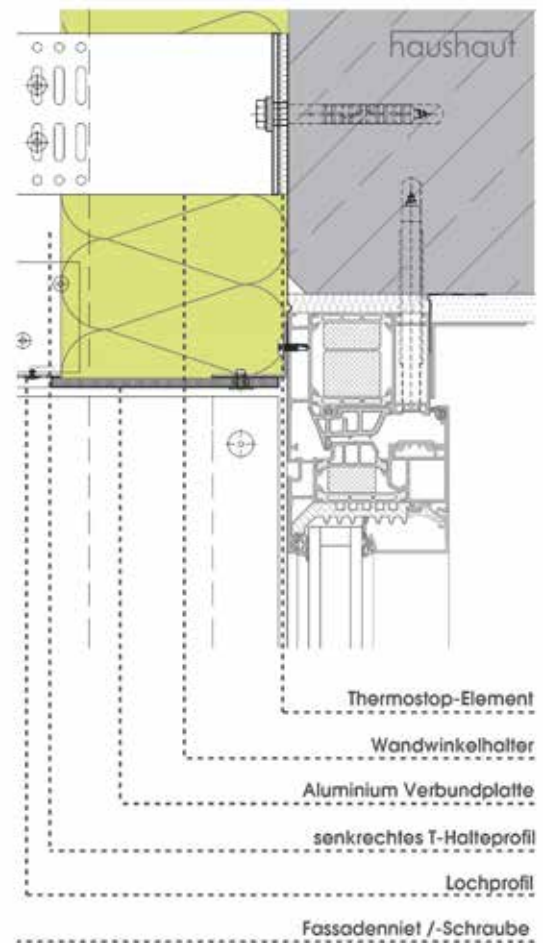


Detail Fensterleibung Var. 2

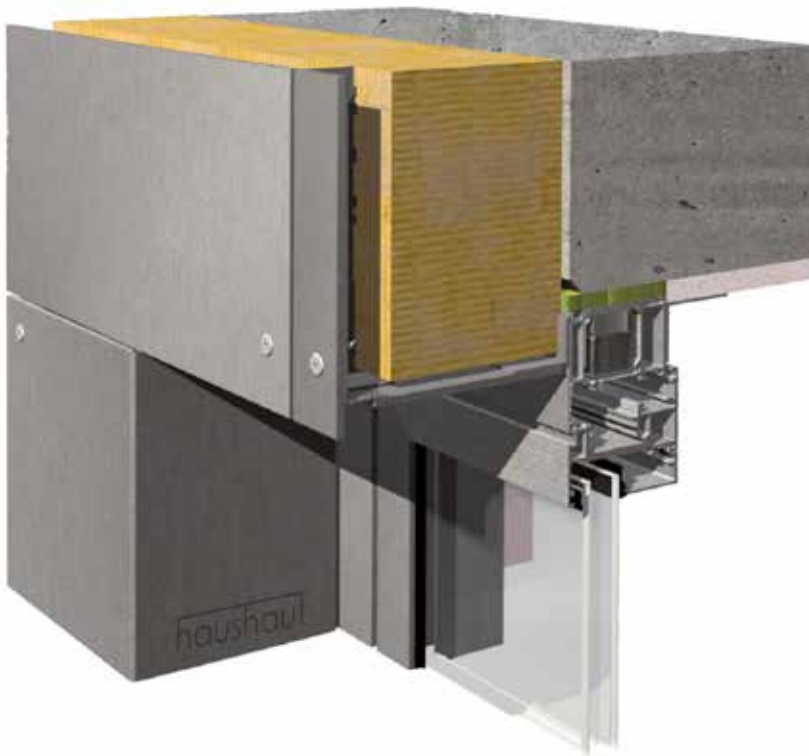
Konstruktionsdetails



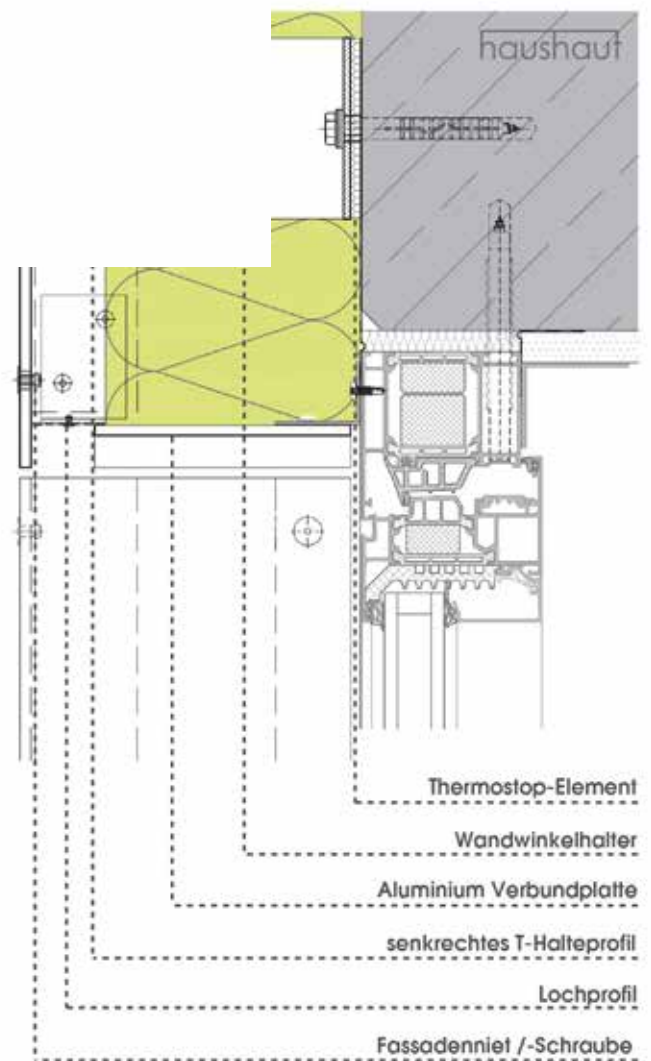
3D-Schnitt Fenstersturz Var. 1



Fenstersturz Var. 1



3D-Schnitt Fenstersturz Var. 2

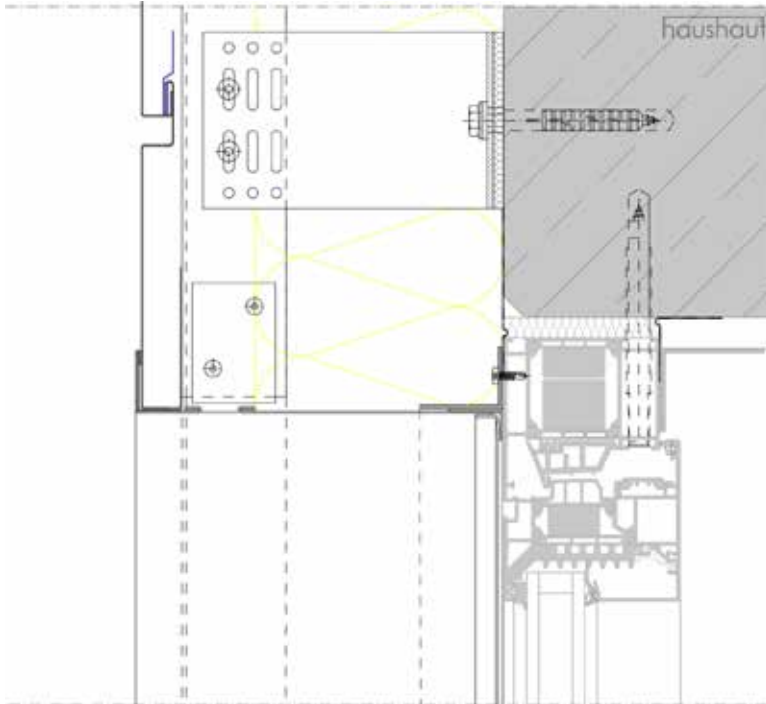


Detail Fenstersturz Var. 2

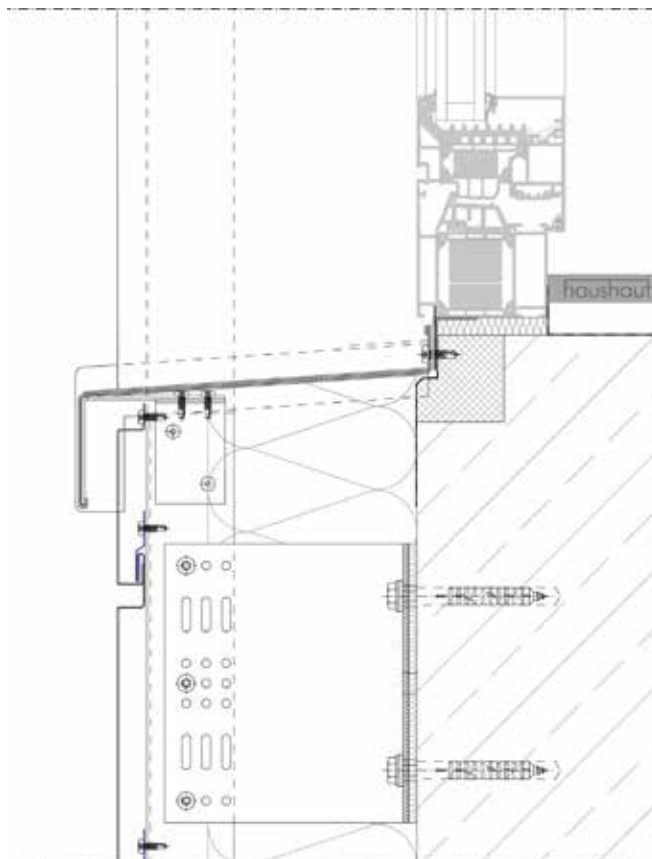
Inhalt

Fenstersturz	3
Fensterbank	4
Außenecke	5
Innenecke	6
Leibung	7
Sockel	8

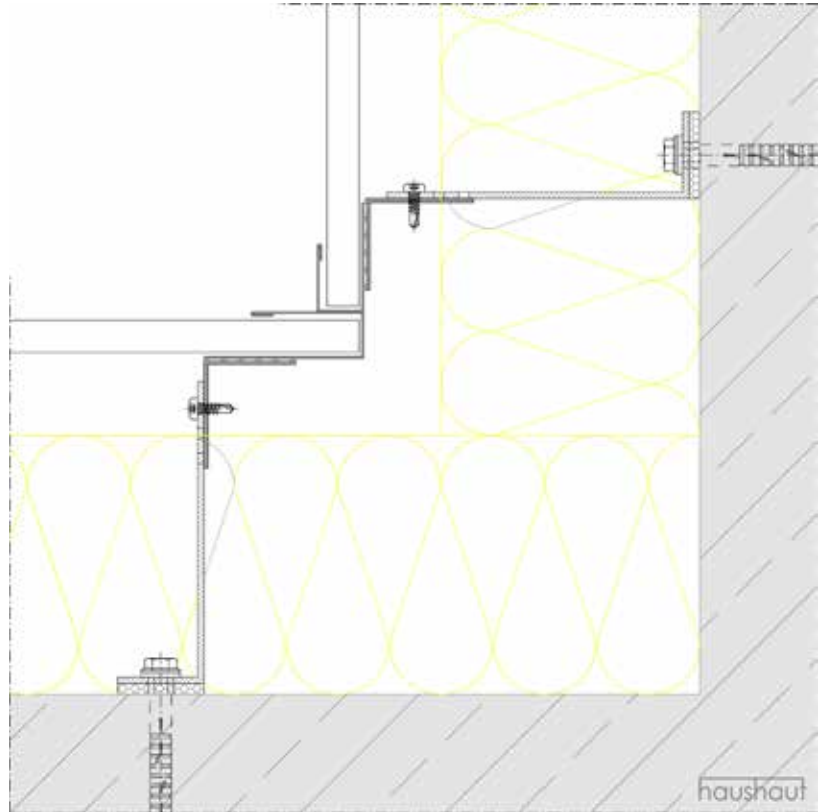




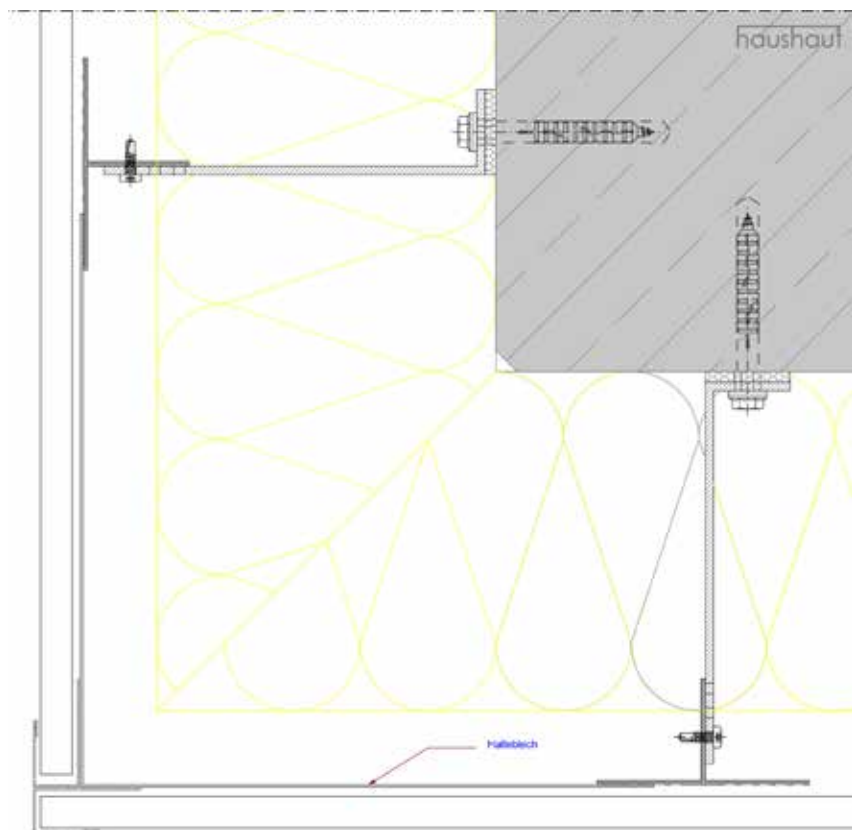
Detail Fenstersturz



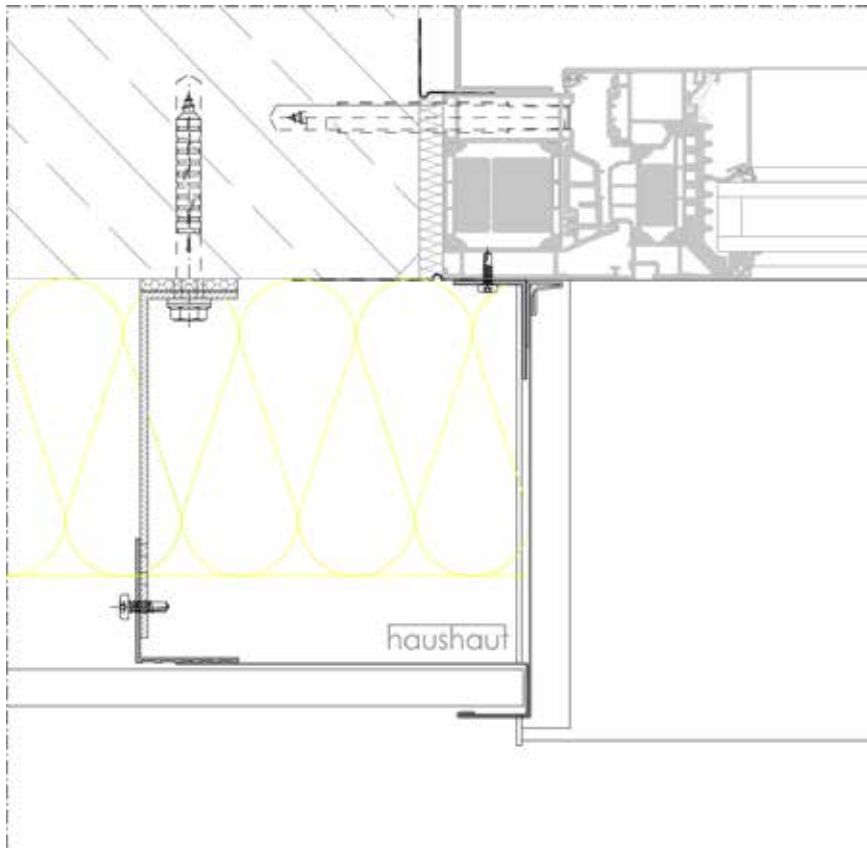
Detail Fensterbank



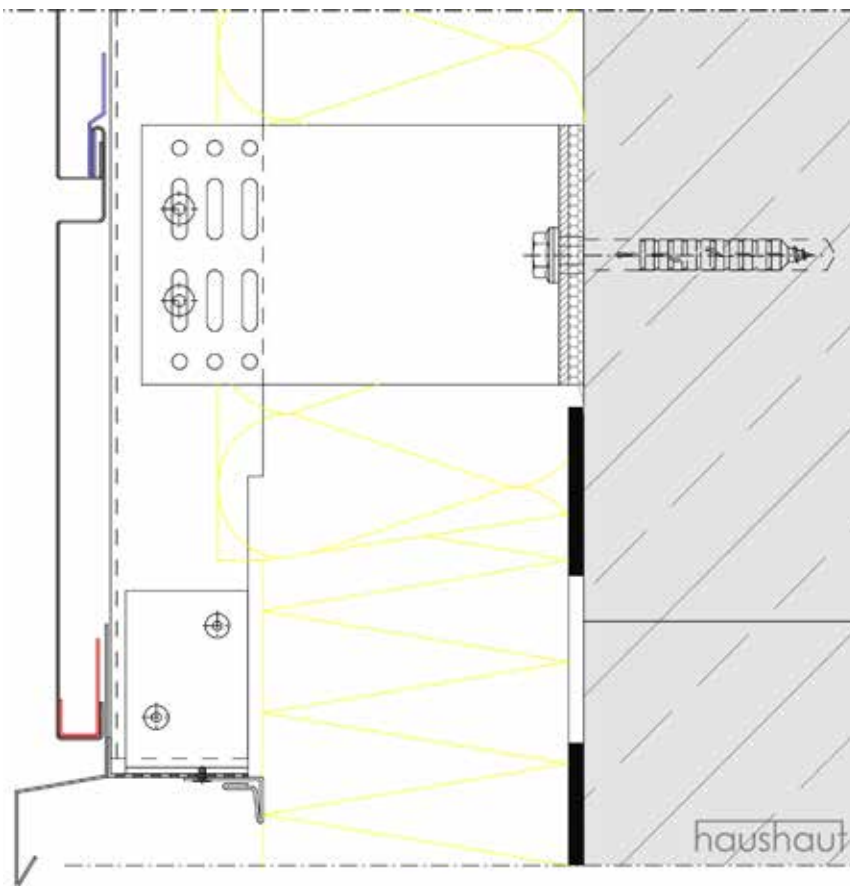
Detail Innenecke



Detail Außenecke



Detail Leibung



Detail Sockel

haushaut

 **POHL Falzprodukte GmbH**

Robert-Bosch-Str. 6 • D-50769 Köln • T +49-221-70911-530 • F +49-221-70911-539 • info@haushaut.com • www.haushaut.com

 **haushaut Pohl GmbH**

Pötschingweg 24 • A- 5580 Tamsweg • M +43 664 75029 963 • F +49-221-70911-539 • info@haushaut.com • www.haushaut.com